



## Windmill Close, Lakenheath, Suffolk, IP27 9BF

Rent - £1,390 PCM

Deposit - £1,603

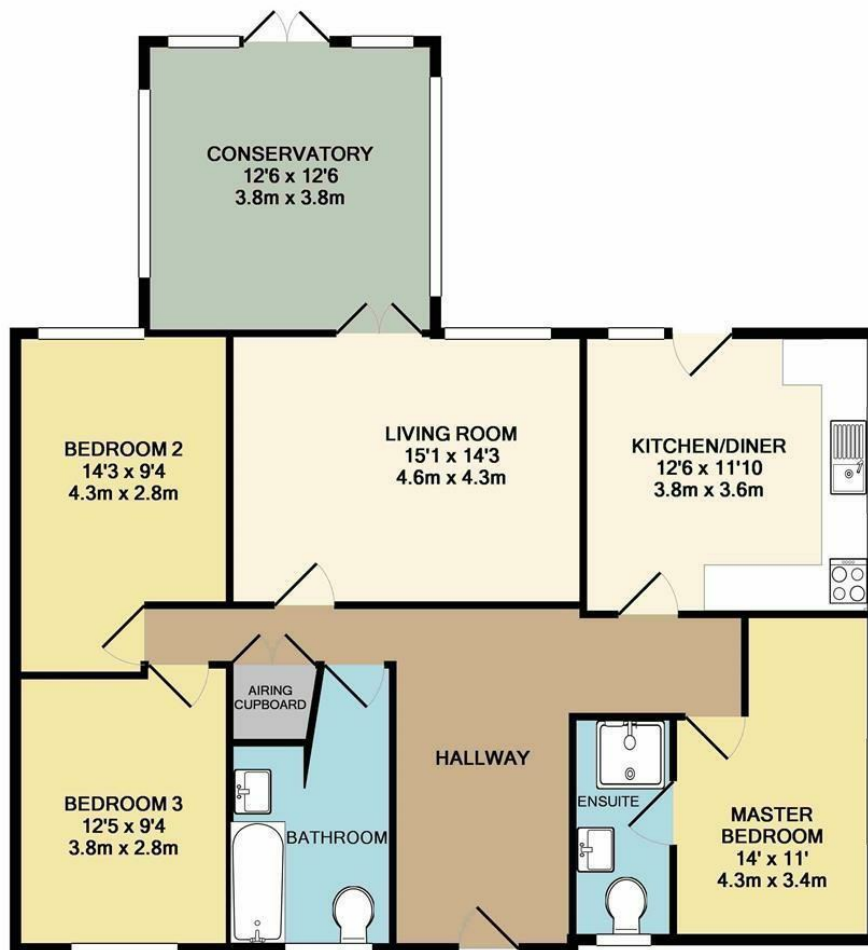
This modern detached bungalow is located on the edge of Lakenheath village, offering a peaceful setting with easy access to both nearby military bases.

The property is beautifully presented and provides spacious, versatile accommodation throughout.

- MODERN DETACHED BUNGALOW
- 3 GOOD SIZE BEDROOMS
- CONSERVATORY
- FAMILY BATHROOM & ENSUITE
- ENCLOSED GARDEN, GARAGE & PARKING
- CLOSE TO BOTH RAF BASES
- OIL HEATING & ENERGY RATING - D
- APPROXIMATE SIZE - 1128 SQ FT.
- COUNCIL TAX BAND - C
- AVAILABLE AT THE END OF AUGUST



Council Tax Band: C - EPC Rating: D 68



TOTAL APPROX. FLOOR AREA 1128 SQ.FT. (104.8 SQ.M.)

Whilst every attempt has been made to ensure the accuracy of the floor plan contained here, measurements of doors, windows, rooms and any other items are approximate and no responsibility is taken for any error, omission, or mis-statement. This plan is for illustrative purposes only and should be used as such by any prospective purchaser. The services, systems and appliances shown have not been tested and no guarantee as to their operability or efficiency can be given  
Made with Metropix ©2018

